



THE BELMONT I

LIVING LARGE WITH LESS

You'll know the Belmont is a modern, well-designed home as soon as you walk through the front door. This home features a sunken open living room and kitchen, with soaring ceilings and access to an optional covered patio. The Belmont's 2nd floor welcomes a large Master Suite with access to a private optional covered balcony and garden tub. Two additional bedrooms and an open TechLoft round out the spacious 2nd floor. This home also offers the option for a finished basement.

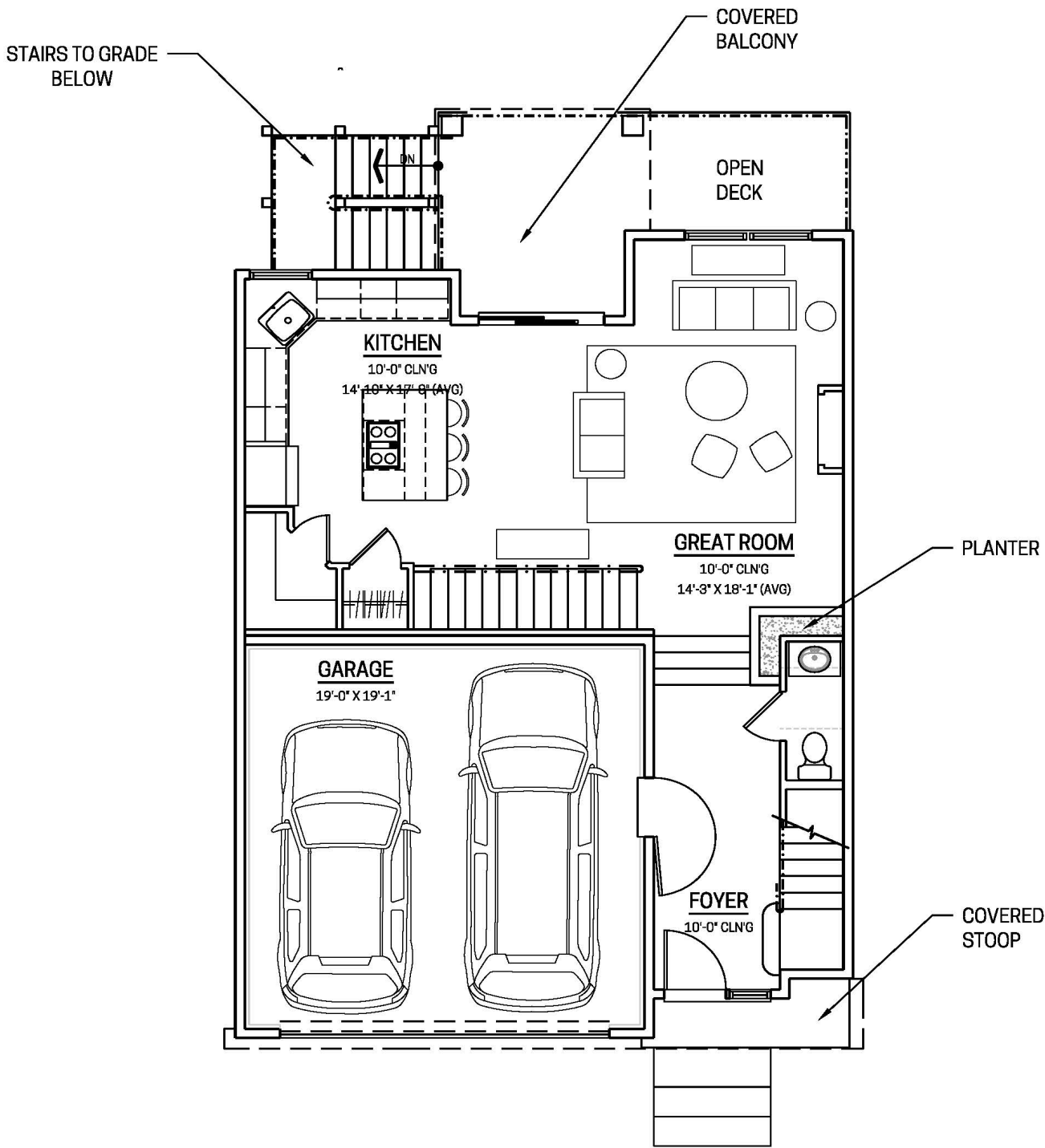


THE BELMONT II

LIVING LARGE WITH LESS

You'll know the Belmont is a modern, well-designed home as soon as you walk through the front door. This home features a sunken open living room and kitchen, with soaring ceilings and access to an optional covered patio. The Belmont's 2nd floor welcomes a large Master Suite with access to a private optional covered balcony and garden tub. Two additional bedrooms and an open TechLoft round out the spacious 2nd floor. This home also offers the option for a finished basement.

THE BELMONT

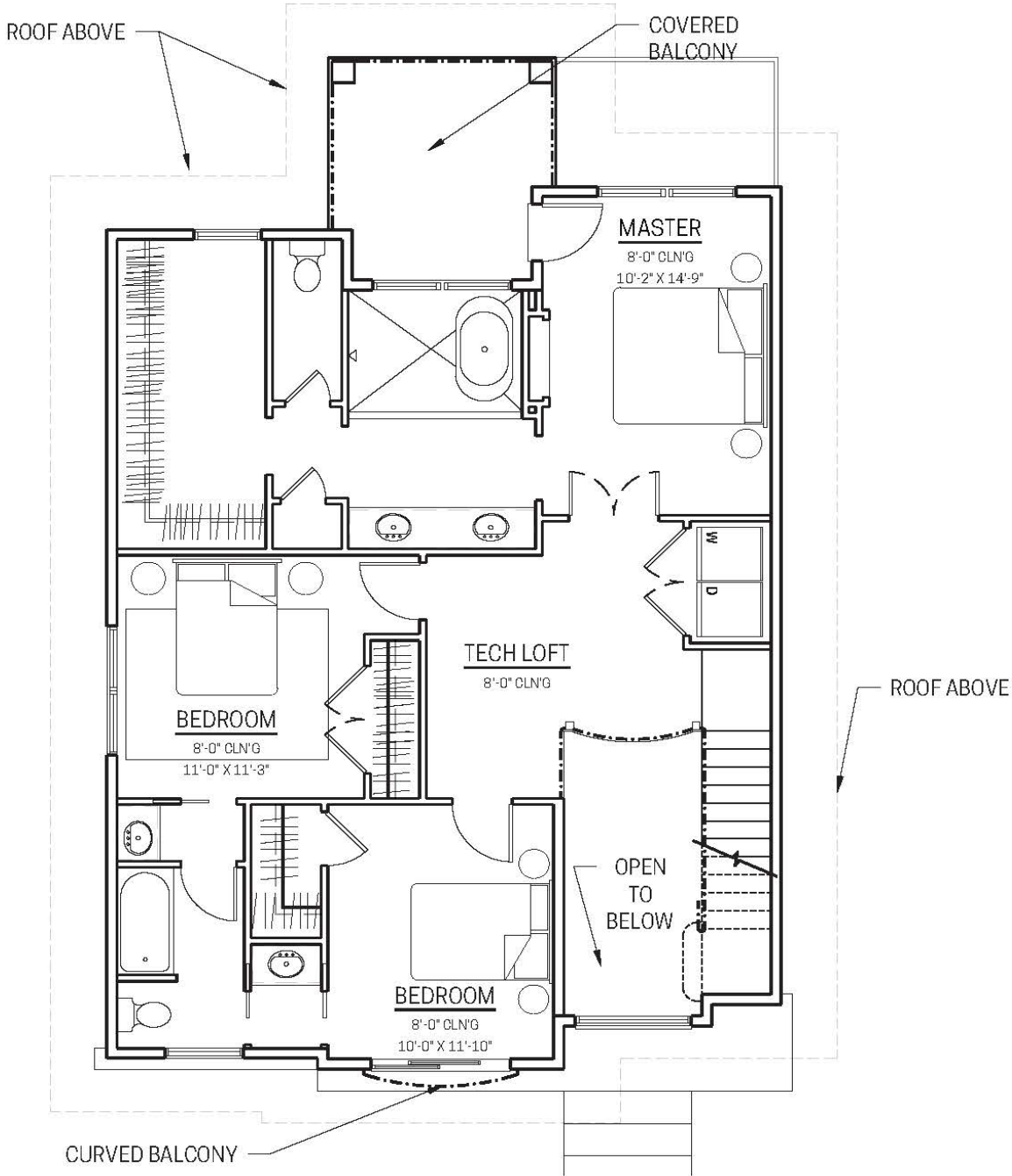


FIRST FLOOR PLAN



Two Story • 1,900 SF
3 Bedrooms • Walkout Master Bedroom to Balcony • Open Tech Loft
2 Car Garage • Option for Finished Basement

THE BELMONT



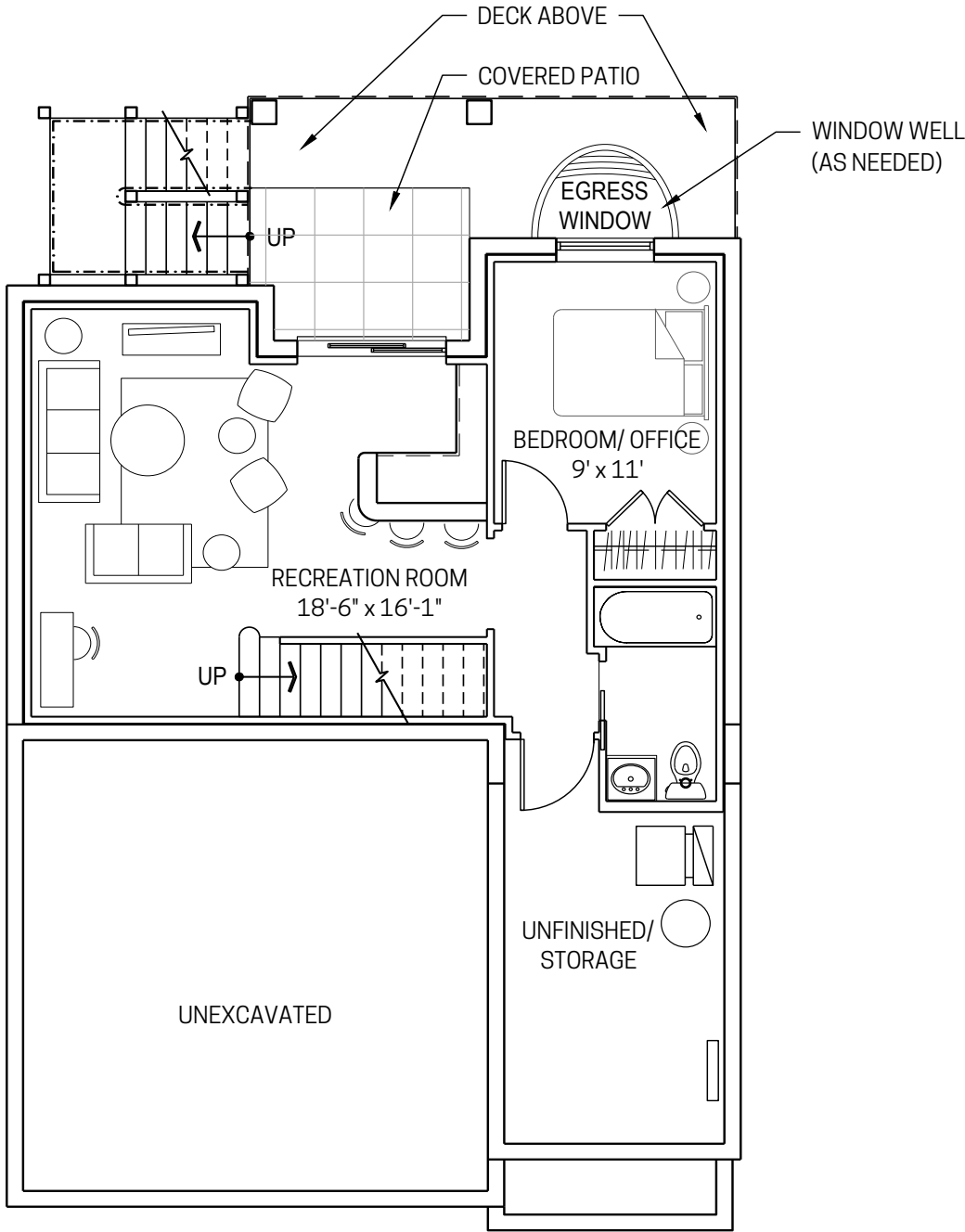
SECOND FLOOR PLAN



Two Story • 1,900 SF

3 Bedrooms • Walkout Master Bedroom to Balcony • Open Tech Loft
2 Car Garage • Option for Finished Basement

THE BELMONT



FINISHED BASEMENT PLAN



Two Story • 1,900 SF

3 Bedrooms • Walkout Master Bedroom to Balcony • Open Tech Loft
2 Car Garage • Option for Finished Basement